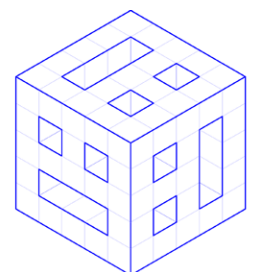


# HOUSEBOAT GRACE DARLING

Zaandam



## Houseboat Grace Darling

Location	Zaandam
Type	renovation
Function	houseboat
Phase	executed
Client	private

We were asked by our client to design the transformation of his sturdy fishing vessel into a houseboat. A challenge we are only too happy to take up, as we have not designed a ship before. And what a ship!

It is the Grace Darling: a 1967 Swedish fishing vessel that has now found its destination in Zaandam.

The ship had already been converted once from a fishing boat to a research vessel for the University of Gothenburg. In the hold where fish used to be stored, small sleeping quarters for the many crew members have been hammered out.

For its new function, the ship no longer needs to sail, but there is a desire to let in much more daylight. A spacious and comfortable living space should be created. A generous master bedroom with ensuite bathroom, 2 bedrooms with bathrooms, a guest room/gameroom and a guest quarters. On the deck a living kitchen with living room, and of course all-round views and a connection to the deck outside. We made changes subtly and carefully so that the original character of the ship is preserved.

Since the ship will no longer sail, the engine was taken out. The cabin therefore had to be cut off and has been reinstalled slightly higher. This gave the ship a second floor. This modification not only provides more space, but also a surprisingly nice view of the surroundings: a nice home office. The cabin has also been fitted with a Portuguese burg and the aft roof has been given a slight curve. The chimney and original curves of the cabin have been restored.

To provide the below-deck quarters with sufficient light, part of the deck has been removed. This creates a patio inside the ship. Adjacent to the patio is the ensuite bathroom and centrally the chill room/gameroom. On deck level, the kitchen is located adjacent to the patio.

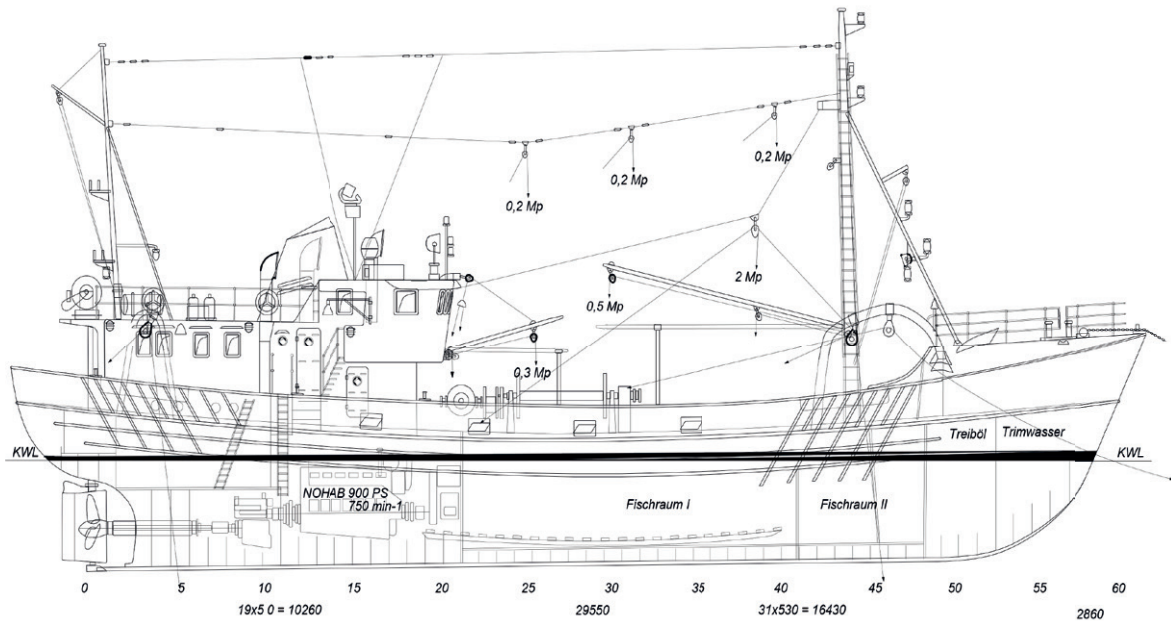
Needless to say, a major sustainability drive will also take place. The ship will be insulated throughout, fitted with heat pumps and PV panels.

Execution is already in full swing. The Grace Darling spent some time in a shipyard in Arnhem, checking the hull and doing all the steelwork. The window frames have now been fitted and the bottom has been weighted down so that the vessel has reached her proper depth. Meanwhile, the Grace Darling is back in Zaandam for the finishing phase.

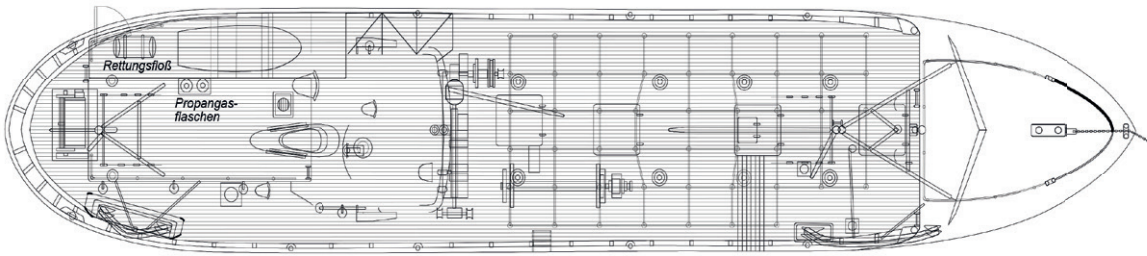
Designing a houseboat brings with it many creative possibilities, but also certainly the necessary challenges. Sometimes it is quite difficult, especially because many parts of the ship are double-curved. But precisely this complexity makes it extra interesting!

What a great challenge this was, we look forward to seeing the end result.

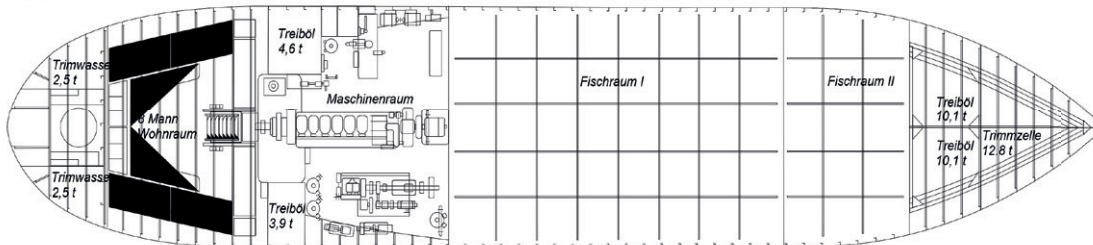
ORIGINAL DRAWINGS



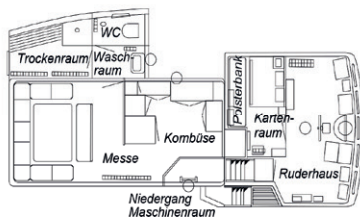
Hauptdeck



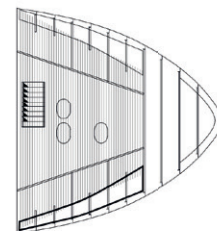
Stauung



Einrichtung Decks-Ruderhaus u. Trockenraum



Einrichtung Walback



Expo, Smögen

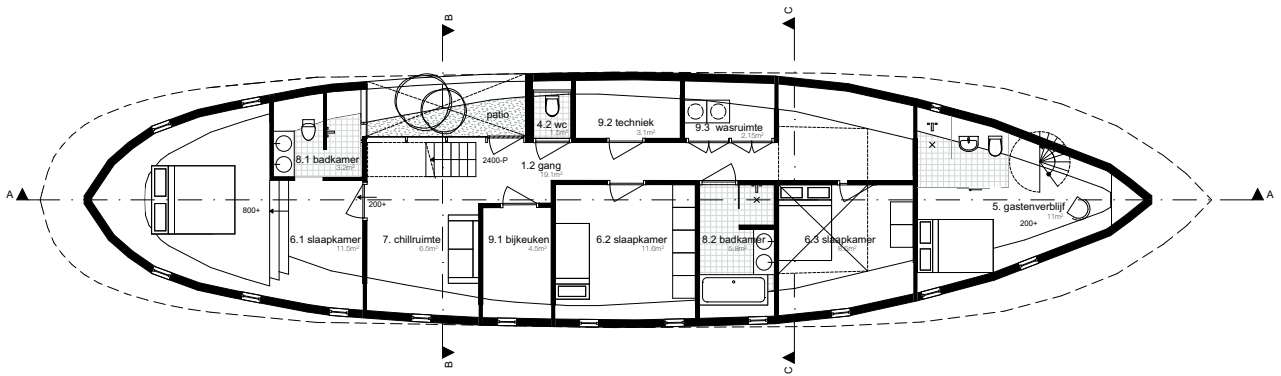
Hauptabmessungen:

Länge über alles 33,60 m 110 ft. 2 in  
 Länge zwischen den Loten 29,56 m 96 ft. 11 in  
 Breite auf spanen 6,60 m 21 ft. 8 in  
 Seitenhöhe 3,30 m 10 ft. 10 in  
 Konstruktionstiefgang 2,70 m 8 ft. 10 in

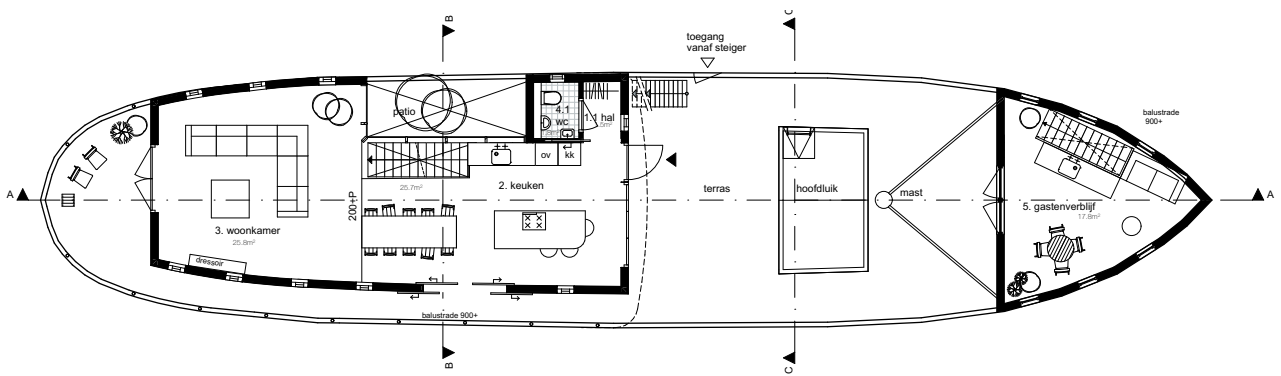
TKR	S 750 18 Schiff	
1967	Generalplan	
VEB Roßlauer Schiffswerft Roßlau / Elbe	110.100 A07	

Figure 11 A Swedish steel trawler built in 1967 at VEB Roßlauer Schiffswerft in what was then East Germany (The Bohuslän regional museum archive, Uddevalla)

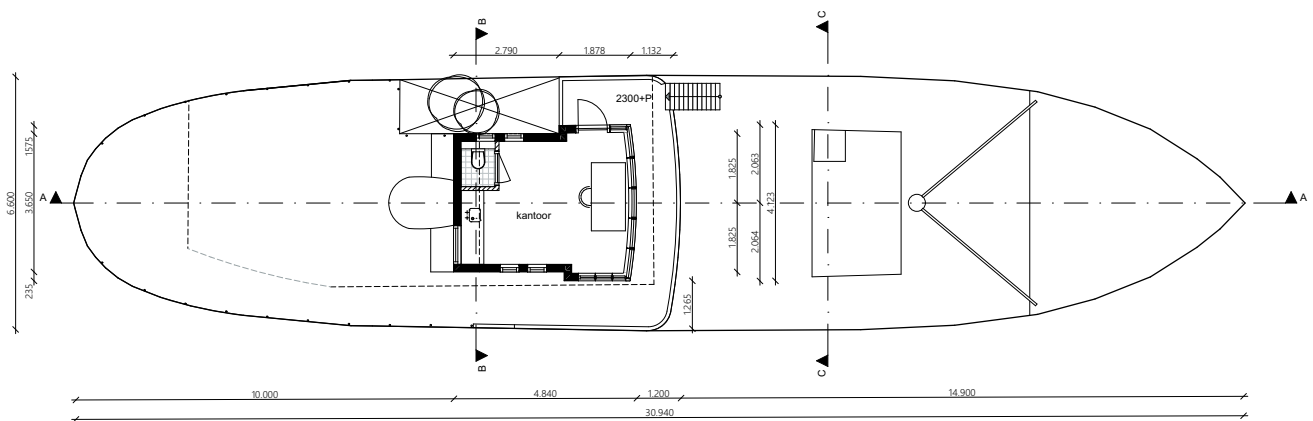
NEW DRAWINGS



FLOOR PLAN HOLD

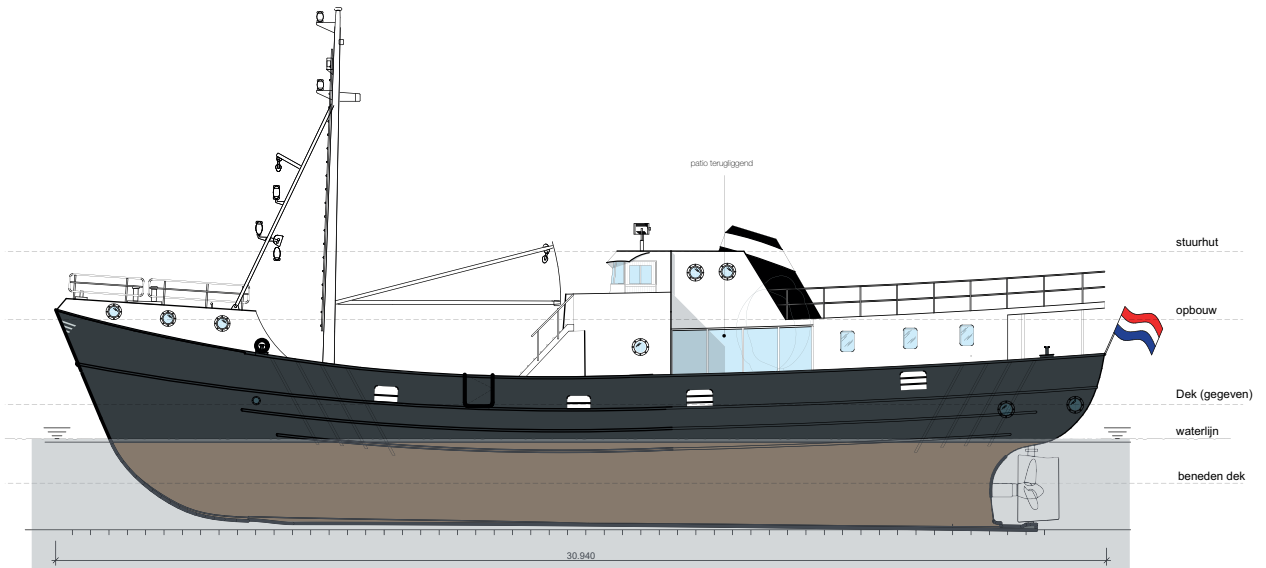


FLOOR PLAN DECK

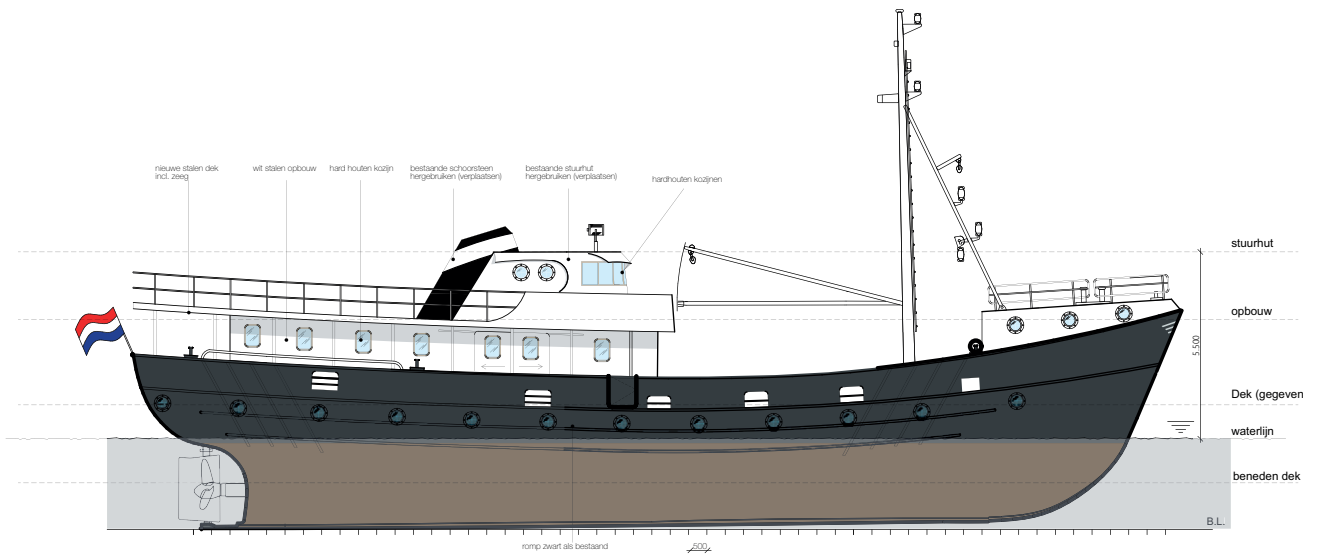


cti u rht it

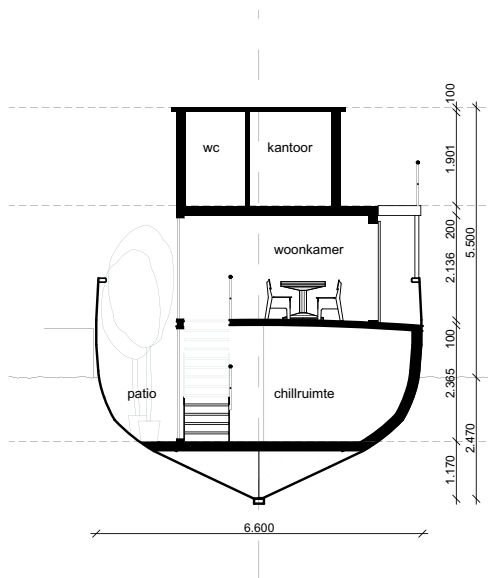
FLOOR PLAN WHEELHOUSE



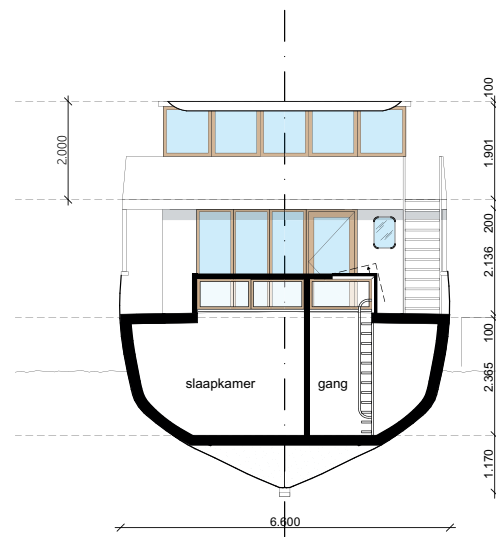
ELEVATION LARBOARD



ELEVATION STARBOARD



SECTION BB



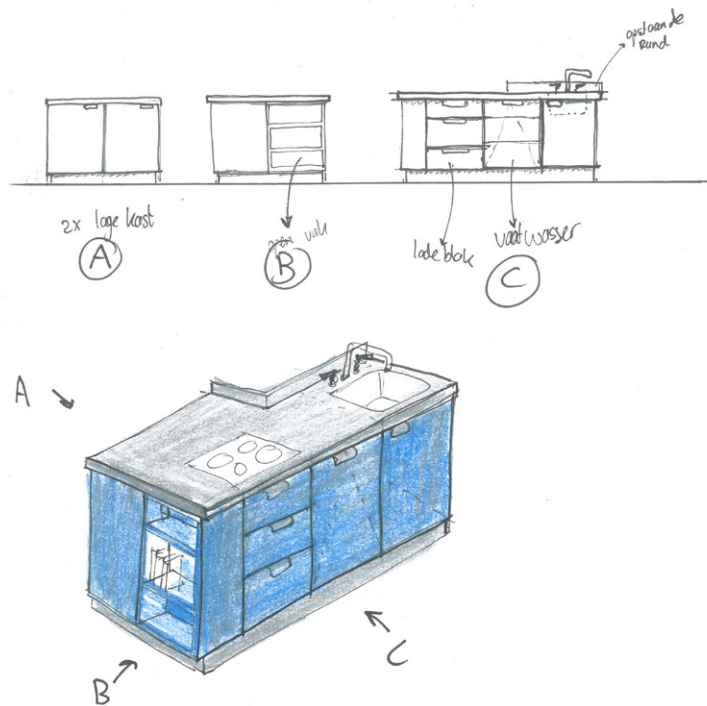
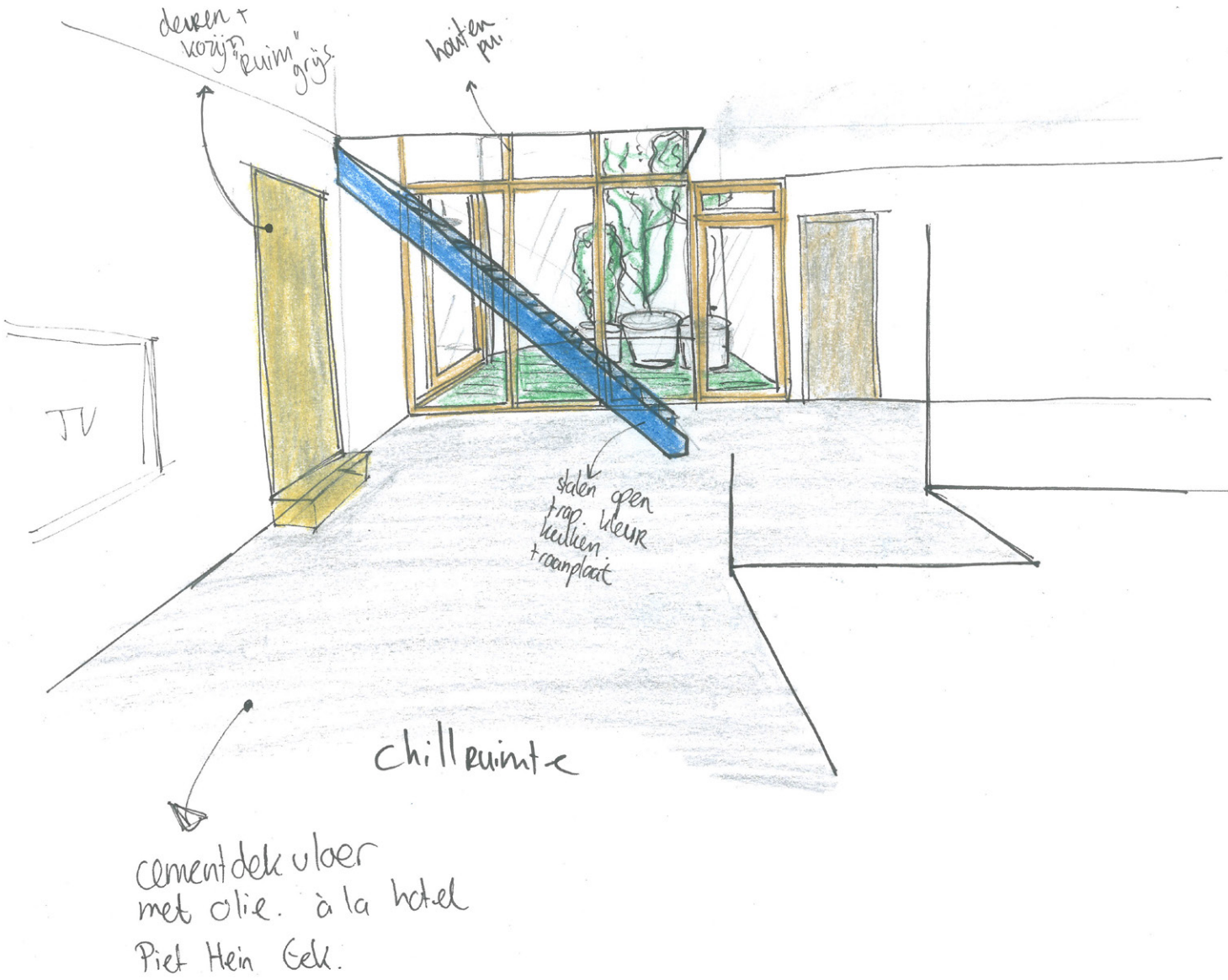
SECTION CC

SECTIONS

BEFORE RENOVATION



INTERIOR SKETCHES



BEFORE AND AFTER





FOR MORE INFORMATION

**EEK EN DEKKERS**  
Halvemaanstraat 30  
5651 BP Eindhoven  
+31 40 205 11 00  
[architectuur@pietheineek.nl](mailto:architectuur@pietheineek.nl)  
[www.eekendekkers.nl](http://www.eekendekkers.nl)